

Circular Economy in wine sector

european **m**ed-clusters **b**oosting **r**emunorative **a**gro-Wine **C**ircular **e**conomy (ref. no. 3182)

[3.7.1]

Partner Responsible: AVIPE

Palmela, 15th of July 2020

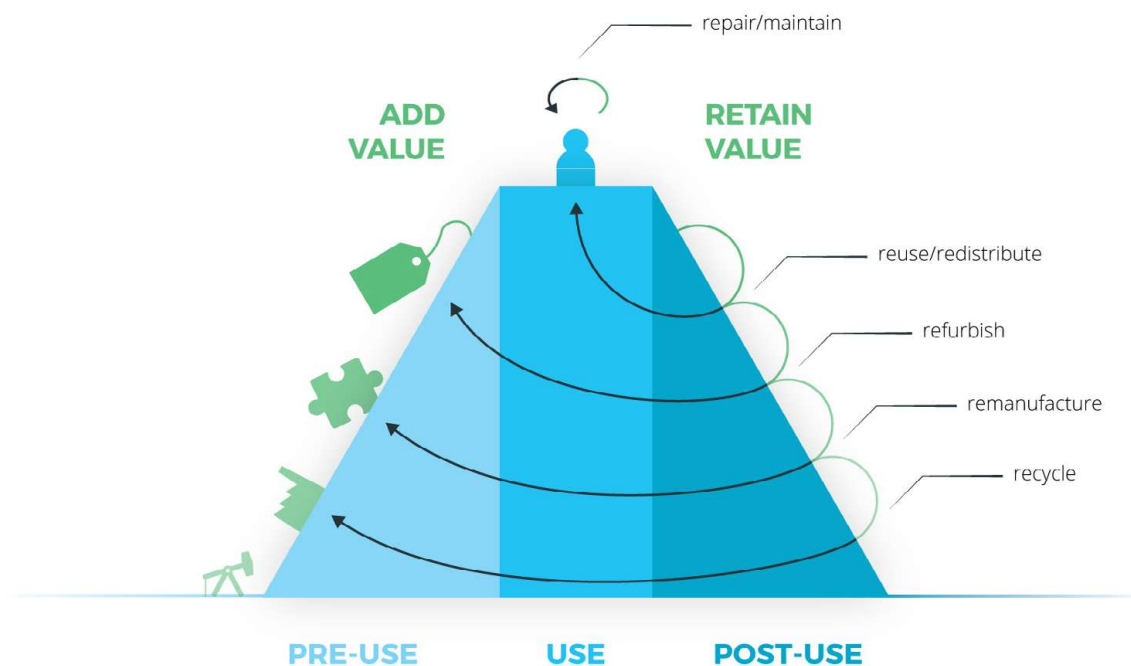
Project co-financed by the European
Regional Development Fund

AVIPE – grapevine growers association in Palmela

- About 3500Ha technical assistance on grapevine
- About 300 farmers assisted



Circular economy concept



Source: <http://www.circle-economy.com/financing-circular-business>

What are the wastes on wine sector?

Vineyards Pruning residues



Winery

stalks



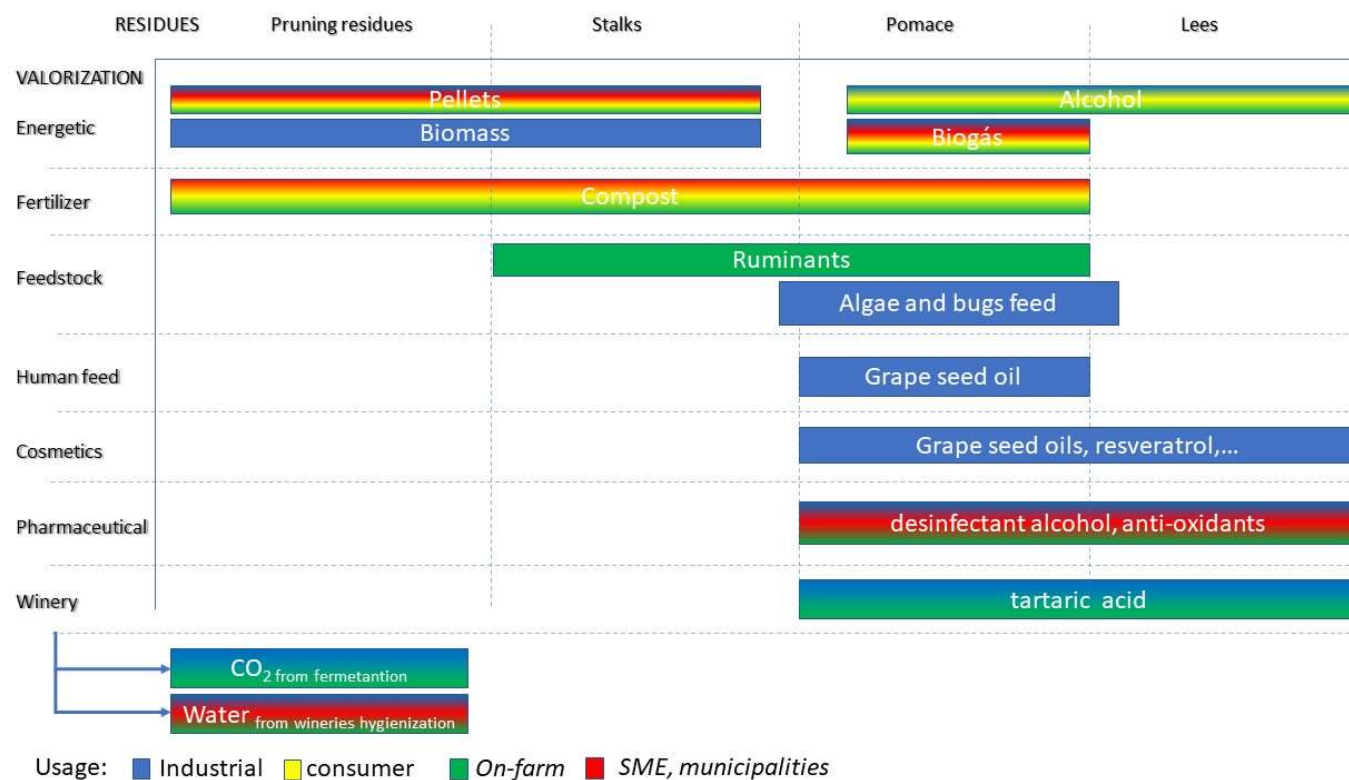
grape pomace



wine lees

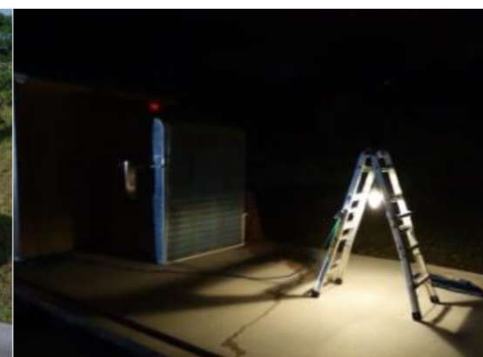
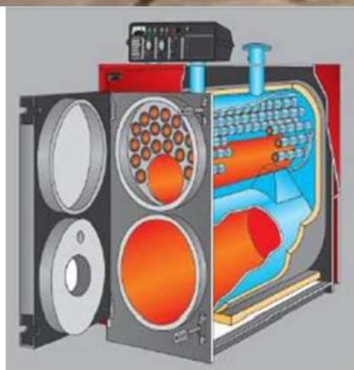


Wine sector waste map



Energy

Pellets



Biogas



Main constraints/difficulties

- Legal obligations to grape pomace and wine lees
- Reluctancy to new ideas
- Fear in non-productive investments
- Scale

THANK YOU

contact for further information:
miguel.cachao@avipe.pt

embrace partners

